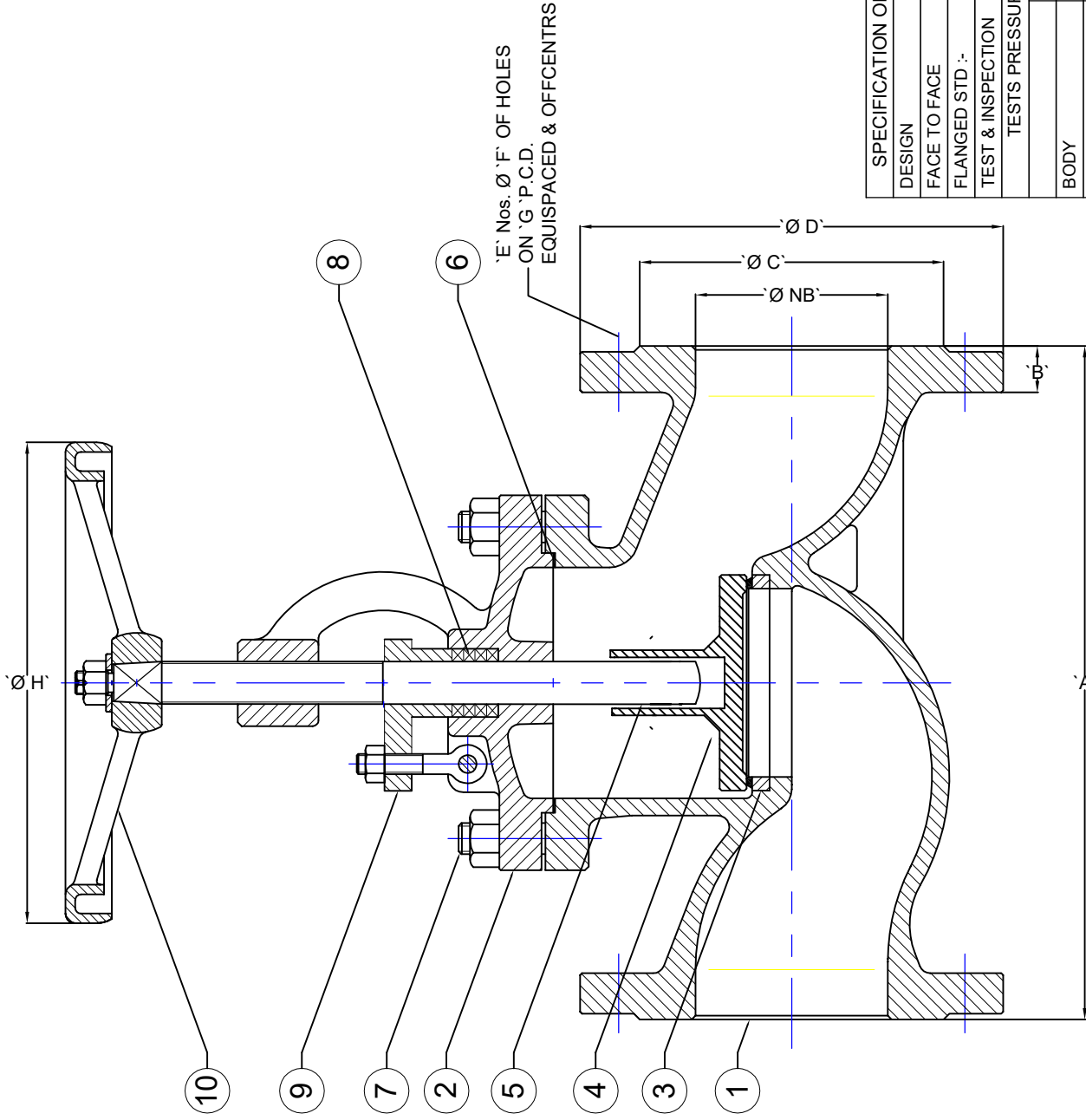


ØNB	A	B	C	ØD	E	F	G	ØH
15	130	14	45	95	4	14	65	115
20	150	16	58	105	4	14	75	115
25	160	16	68	115	4	14	85	135
32	180	16	78	140	4	18	100	135
40	200	18	88	150	4	18	110	150
50	230	20	102	165	4	18	125	150
65	290	20	122	185	4	18	145	220
80	310	22	138	200	8	18	160	220
100	350	24	158	220	8	18	180	295



10	HAND WHEEL	CAST IRON / MALLEABLE IRON
9	GLAND	C.I. / GG 25
8	GLAND PACKING	PURE GRAFOIL
7	NUT & BOLT	ASTM A 193 GR B7 & A 194 GR 2H
6	GASKET	PURE GRAPHITE
5	SPINDLE	STAINLESS STEEL AISI 410
4	STOPPER	LEADED TIN BRONZE (LTB2)
3	SEAT RING	LEADED TIN BRONZE (LTB2)
2	BONNET	C.I. / GG 25
1	BODY	C.I. / GG 25
No.	DESCRIPTION	MATERIAL

**MATERIAL & DESCRIPTIONS**

NOTE :- ALL DIMENSIONS ARE IN mm

SPECIFICATION OF STANDARDS		TITLE :-		PROJ.:-	
DESIGN	DIN 3356 / F1	<b>PN -16 SDNR GLOBE</b>		DRN BY	I.S.P
FACE TO FACE	B 16.10	( FLANGE ENDS )		CHECK BY	A.R.D.
FLANGED STD. :-	ISO 2631	WEIGHT OF GLOBE VALVE		APPD BY	R. E. D.
TEST & INSPECTION	API 598	Aprox. Wt.	Kg.	SCALE	N.T.S.
TESTS PRESSURE (Kg / Cm <sup>2</sup> )		DATE			
BODY	HYDROSTATIC	28-06-19			
SEAT & REVERSE SEAT	AIR				
	25				
	16				
DRG. No.	REV. No.				
DV / SDNRGLB / PN -16 / 01	0				

**Dalsons Valves**



D-58, MIDC MIRAJ BLOCK MIRAJ  
DIST - SANGLI ( M.S. ) INDIA

NOTE :-  
1. AS CONTINUOUS IMPROVEMENT IN DESIGN PROCESS  
THE DIMENSIONS MENTIONED HERE ARE SUBJECTED TO CHANGE